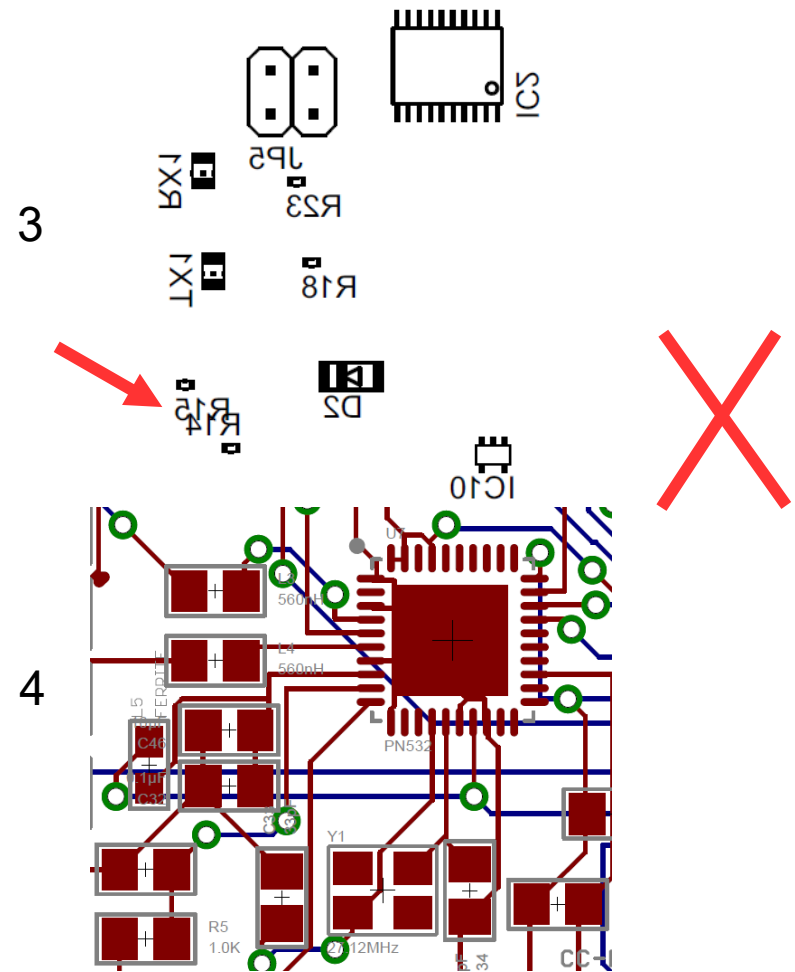
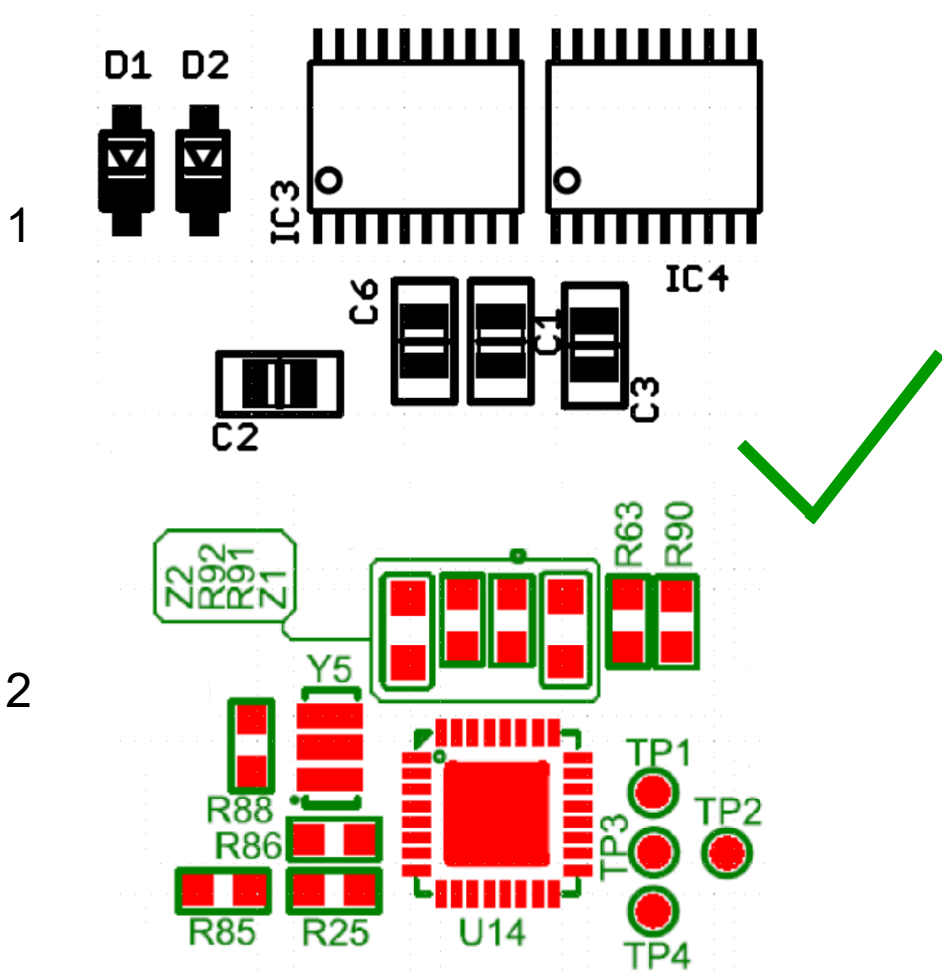


PCBA Position Chart Rule

Mark the part ID for all component. And mirrored the boards when you export for bottom layer. Do not show the layout in the PCBA position chart. Avoid part IDs overlapped with each other. Below are example.

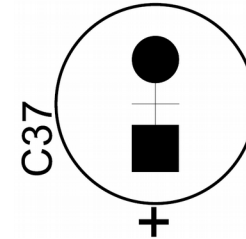
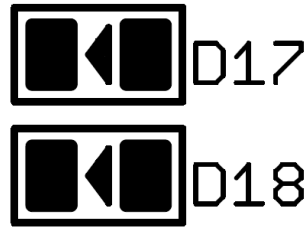
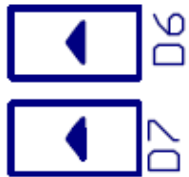
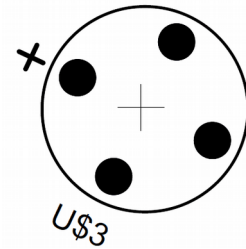


(1 and 2 is clean and good for assembling. 3 and 4 is not clear and bad for assembling)

PCBA Position Chart Rule

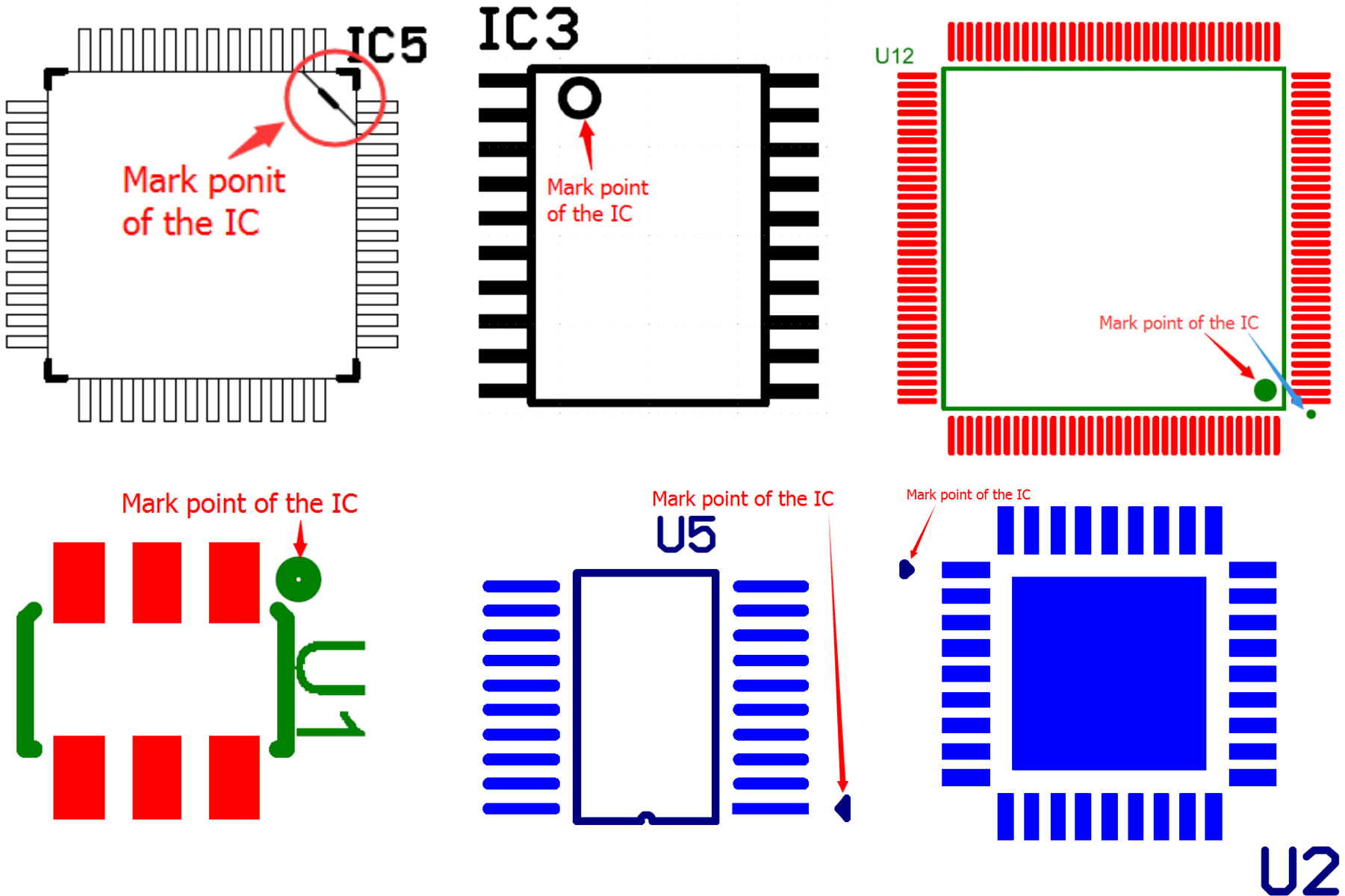
Mark all the diode and capacitor polarity, also IC's orientation or any other component if it need to be defined the direction.

Below are good examples.



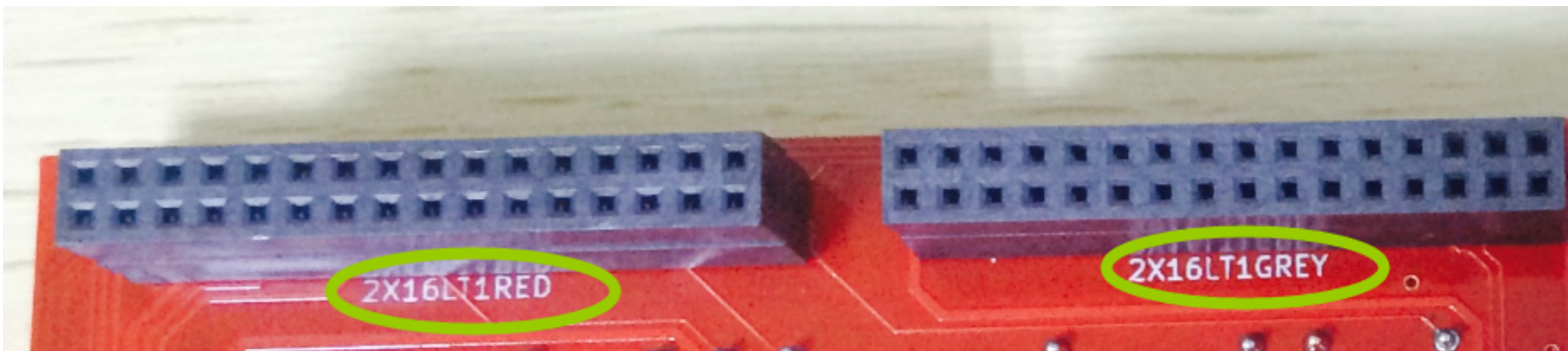
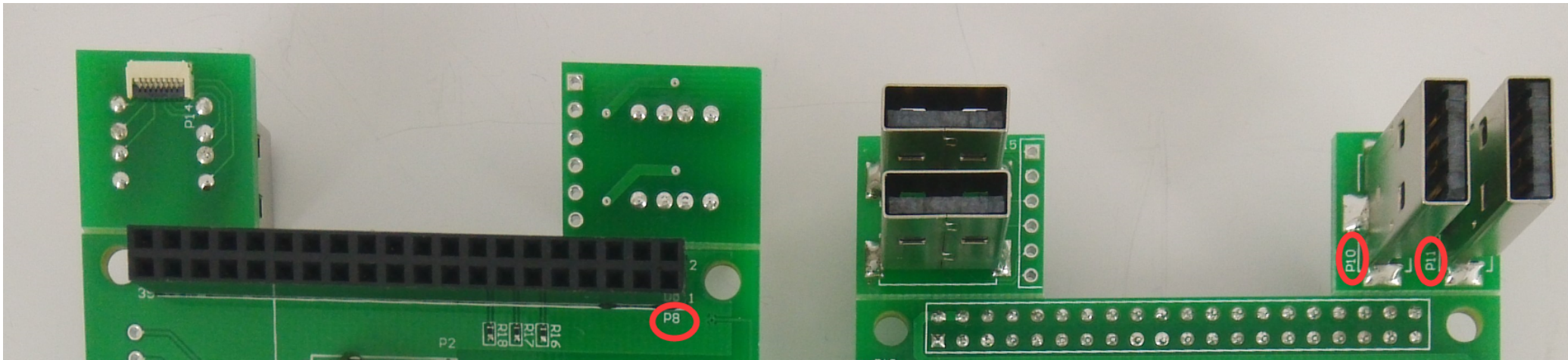
PCBA Position Chart Rule

The IC mark point will be the same as the PCBA position chart mark. Even the pin 1 of IC is not there.



PCBA Position Chart Rule

The THT part will be placed on the same layer with the part ID. Soldered on back side.



PCBA Position Chart Rule

Please let us know in advance if you did not follow our assembling rule.

Then we will mark on the quotation as reminding for assembling